

PING®

TOUR NEWS

OCTOBER 12, 2020

1ST WEEK. 1ST WIN.



Tyrrell Hatton gave the G425 driver a win in its first week on tour.

Relying on a new G425 driver, 3-wood and 7-wood that went into the bag last week, Tyrrell Hatton made good use of the PING technology, winning the European Tour's flagship event, the BMW PGA Championship, by four strokes at Wentworth Golf Club in his native England. Hatton achieved two career goals in claiming his fifth European Tour title: cracking the top 10 in the Official World Golf Ranking (he's 10th), and winning a tournament he's long coveted.

"From walking the course as a five-year-old and hoping one day I'd be inside the ropes to now holding this trophy is an amazing feeling," he said.

See his What's in the Bag, page 2.

PING 1-2-3 AT BMW

PING pros finished 1-2-3 at the BMW PGA Championship, where Victor Perez was runner-up and Andy Sullivan was third, while Eddie Pepperell placed sixth, giving PING four of the top six.

DRIVER VICTORIES GROW

A G410 LST was in the winner's bag at the PGA Tour's Shriners Hospitals for Children Open, where Austin Cook finished T2 in a playoff. It is the 61st time a G410 driver has been in the winner's circle worldwide. PING equipment has

contributed to four of the first five victories on the 2020-21 calendar. PING drivers have been played by three winners, and Blueprint irons contributed to a fourth title.



Victor Perez

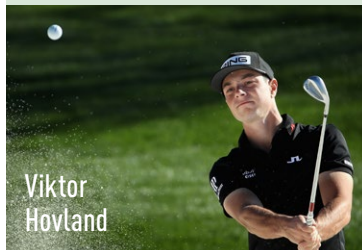
THIS WEEK

PGA TOUR

THE CJ CUP @ SHADOW CREEK

Shadow Creek GC
Las Vegas, Nev.
Oct. 15-18

Cameron Champ, Corey Conners
Harris English, Tony Finau
Tyrrell Hatton, Viktor Hovland
Mackenzie Hughes, Andrew Landry
Sebastian Muñoz, Joaquín Niemann
Louis Oosthuizen, Michael Thompson
Bubba Watson



Viktor Hovland

EUROPEAN

SCOTTISH CHAMPIONSHIP PRESENTED BY AXA

Fairmont St Andrews
St Andrews, Fife, Scotland
Oct. 15-18

SSP Chawrasia, Oliver Farr
Sebastián García Rodríguez
Gregory Havret, Calum Hill
Liam Johnston, Adrian Meronk
Eddie Pepperell, Cormac Sharvin
Brandon Stone, Connor Syme
Lee Westwood



Lee Westwood

CHAMPIONS

DOMINION ENERGY CHARITY CLASSIC

The Country Club of Virginia
Richmond, Va.
Oct. 16-18

K.J. Choi, Chris DiMarco
Tim Herron
Miguel Ángel Jiménez
Jeff Maggert, Kevin Sutherland
Ken Tanigawa, Kirk Triplett



Miguel Ángel Jiménez



PING
SHOT
OF THE
WEEK

Austin Cook was dialed in tee-to-green at the Shriners Hospitals for Children Open at TPC Summerlin. The 29-year-old Arkansas native finished T2 in a playoff, his best result since his win at The RSM Classic in November 2017. His -23 score was fueled by consistency (63-65-67-66), and in his opening-round 8-under 63 he hit 17 of 18 greens, or 94.44%. His sharp iron play carried over the week as he reached 63 of 72, 87.50%.

#1 DRIVER BRAND AGAIN

PING was the #1 driver brand at the Korn Ferry Tour's Orange County National Championship, with 40 drivers in play; 27 were G410 models. A G400 Max



iBlade irons were played by the winner.

PING Pro Stephan Jaeger was T2 playing a G410 LST driver and G410 7-wood among his bagful of PING clubs.

It marked the sixth time since August that PING has led the Korn Ferry driver brand count.

#1 IRON BRAND AT MAJOR

PING was the most-played iron brand at the KPMG Women's PGA Championship, where 34 sets were in bags at the LPGA major. Of those, 27 sets were i210, making it the #1 iron model. PING was also the #1 iron brand and i210 the #1 model at the LPGA's first major, the ANA Inspiration. i210 irons were relied



on by three PING pros who turned in top-10 performances at the KPMG. Brooke Henderson was sixth, Jennifer Kupcho was T7 and Bianca Pagdanganan, T9.

TYRRELL HATTON

WHAT'S IN THE BAG

DRIVER

G425 LST, 9°@8.75°, small -, Mitsubishi Diamana RF 60 TX, tipped 1", D0+



FAIRWAYS

G425 LST 3W, @14°, small-, Mitsubishi Diamana DF 70 X, tipped 1/2", D1+

G425 MAX 7W, @19.5°, flat-, Mitsubishi Diamana DF 80X, tipped 1 1/2", D1

IRONS

i210, 4-PW, green cc, Nippon Modus 3 Tour 120X, D1

WEDGE

Glide 3.0, 50°@49.5°, green cc, Nippon Modus 3 Tour 120X, D3+

PUTTER

PING Vault Oslo, straight arc, 32.25" 19.5° lie, 2.5° loft, PING PP58